

WARING
COMMERCIAL

MX1300XTEE

64 oz. BPA-Free copolyester container Europe

MX1300XTEES

64 oz. stainless steel container Europe

MX1300XTPEE

48 oz. BPA-Free copolyester container Europe

MX1500XTPSEE

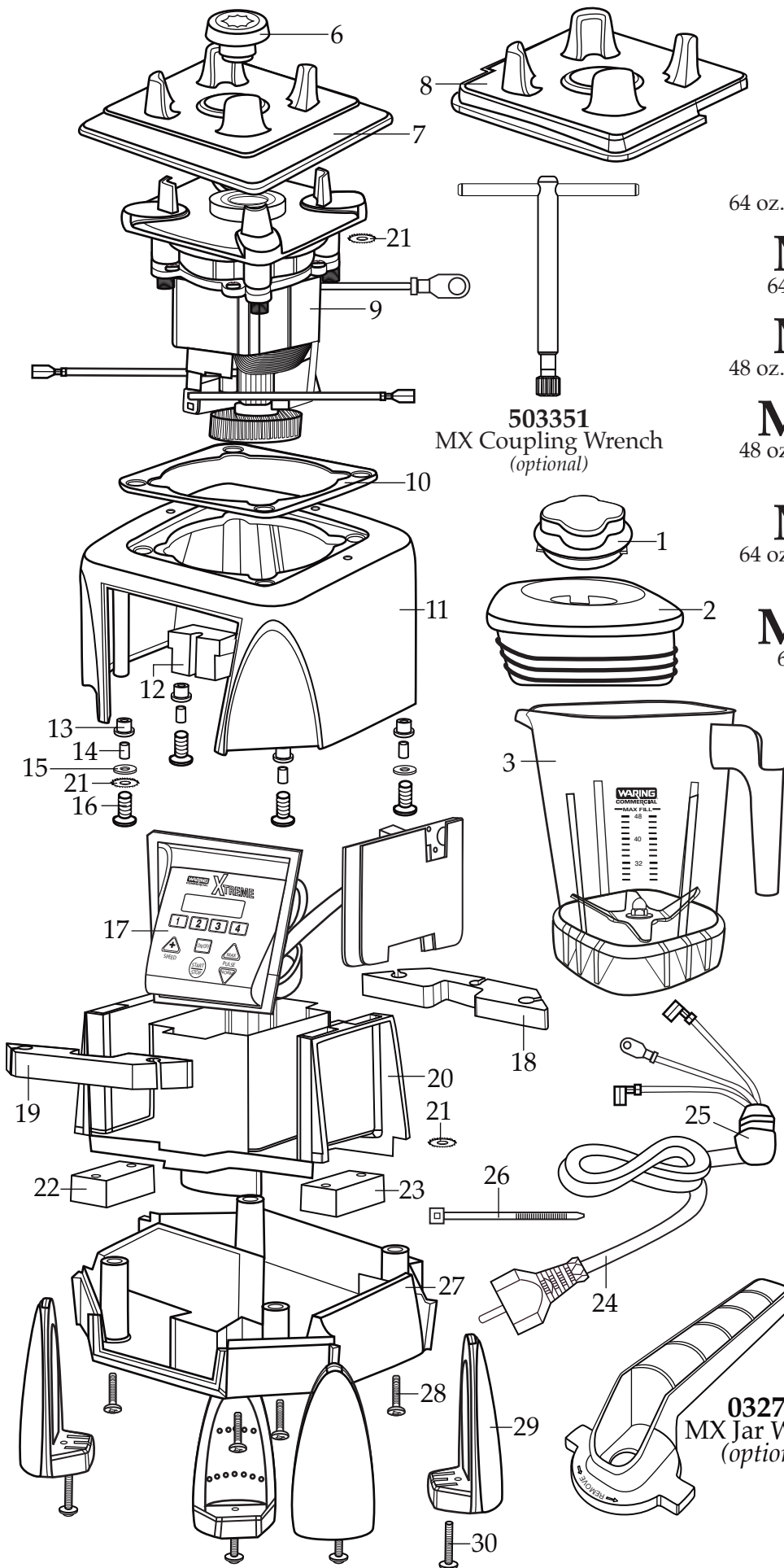
48 oz. BPA-Free copolyester container with
Sound Enclosure Europe

MX1500XTSEE

64 oz. BPA-Free copolyester container with
Sound Enclosure Europe

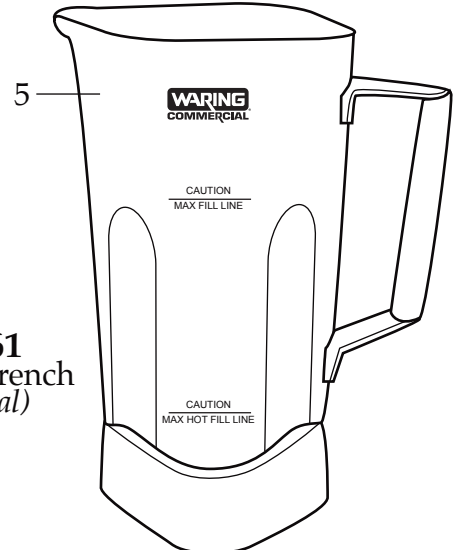
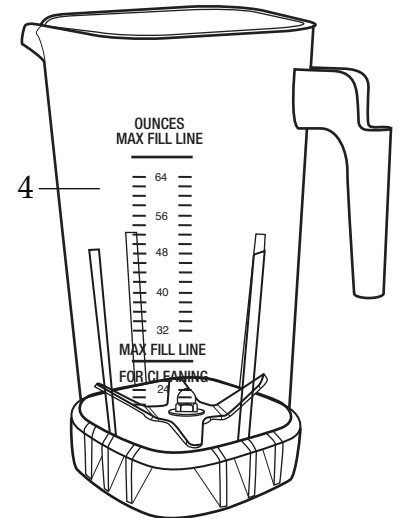
MX1500XTSEES

64 oz. stainless steel container with
Sound Enclosure Europe



503351
MX Coupling Wrench
(optional)

032761
MX Jar Wrench
(optional)



Catalog
 MX1300XTEE
 MX1300XTEES
 MX1300XTPEE
 MX1500XTSEE
 MX1500XTPSEE
 MX1500XTSEES

Model
 MX1300XT11CE
 MX1300XT31CE
 MX1300XT21CE
 MX1500XT12SEE - MX1500XT12CE
 MX1500XT22SEE - MX1500XT22CE
 MX1500XT32CE



Illustration #	Part #	Description
1	028769-E	Jar Lid Cover
2	028768 026424-V	Jar Lid Jar Lid (<i>older units</i>)
3	503398	Jar with Blending Assembly (64 oz. stackable Raptor)
4	503439 503348	Jar with Blending Assembly (48 oz. stackable Raptor 140401 date code) Jar with Blending Assembly (48 oz. Eastman)
5	503346	Jar with Blending Assembly (64 oz. stainless steel)
6	028538	Drive Clutch
7	026442	Jar Pad
8	026443	Sound Enclosure Jar Pad
9	028824	Motor
10	026437	Dampening Plate Gasket
11	503382-E 028032-09	MX Housings, Ferrite Core & Cord Black Top Housing (<i>older units</i>)
12	028541	Motor Foam (2 required)
13	026439	Dampening Plate Bushing (4 required)
14	026453	Dampening Plate Sleeve (4 required)
15	026459	Washer (2 required)
16	028929 026459 026455	Screw (4 required) Washer (4 required <i>older units</i>) Screw (4 required <i>older units</i>)
17	029816	Soft Start Control Panel
18	028248	Housing Foam Rear Baffle
19	028249	Housing Foam Front Baffle
20	503382-E 028240	MX Housings, Ferrite Core & Cord Motor Housing (<i>older units</i>)
21	002943	Washer (3 required)
22	028247	Bottom Housing Foam Baffle
23	028542	Foam Baffle
24	013731	Cable Tie (3 required) – (2 required <i>older units</i>)
25	007556	Strain Relief
25	503382-E 503141	MX Housings, Ferrite Core & Cord Cord Set (<i>older units</i>)
27	503382-E 028241-09-x	MX Housings, Ferrite Core & Cord Black Bottom Housing (<i>older units</i>)

Catalog
 MX1300XTEE
 MX1300XTEES
 MX1300XTPEE
 MX1500XTSEE
 MX1500XTPSEE
 MX1500XTSEES

Model
 MX1300XT11CE
 MX1300XT31CE
 MX1300XT21CE
 MX1500XT12SEE - MX1500XT12CE
 MX1500XT22SEE - MX1500XT22CE
 MX1500XT32CE



Illustration #	Part #	Description
1	028769-E	Jar Lid Cover
2	028768 026424-V	Jar Lid Jar Lid (<i>older units</i>)
3	503398	Jar with Blending Assembly (64 oz. stackable Raptor)
4	503439 503348	Jar with Blending Assembly (48 oz. stackable Raptor 140401 date code) Jar with Blending Assembly (48 oz. Eastman)
5	503346	Jar with Blending Assembly (64 oz. stainless steel)
6	028538	Drive Clutch
7	026442	Jar Pad
8	026443	Sound Enclosure Jar Pad
9	028824	Motor
10	026437	Dampening Plate Gasket
11	503382-E 028032-09	MX Housings, Ferrite Core & Cord Black Top Housing (<i>older units</i>)
12	028541	Motor Foam (2 required)
13	026439	Dampening Plate Bushing (4 required)
14	026453	Dampening Plate Sleeve (4 required)
15	026459	Washer (2 required)
16	028929 026459 026455	Screw (4 required) Washer (4 required <i>older units</i>) Screw (4 required <i>older units</i>)
17	029816	Soft Start Control Panel
18	028248	Housing Foam Rear Baffle
19	028249	Housing Foam Front Baffle
20	503382-E 028240	MX Housings, Ferrite Core & Cord Motor Housing (<i>older units</i>)
21	002943	Washer (3 required)
22	028247	Bottom Housing Foam Baffle
23	028542	Foam Baffle
24	013731	Cable Tie (3 required) – (2 required <i>older units</i>)
25	007556	Strain Relief
25	503382-E 503141	MX Housings, Ferrite Core & Cord Cord Set (<i>older units</i>)
27	503382-E 028241-09-x	MX Housings, Ferrite Core & Cord Black Bottom Housing (<i>older units</i>)

Catalog

MX1300XTEE
 MX1300XTEES
 MX1300XTPEE
 MX1500XTSEE
 MX1500XTPSEE
 MX1500XTSEES

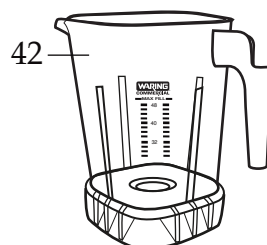
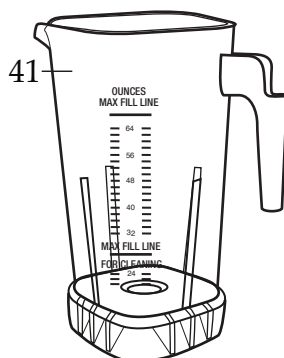
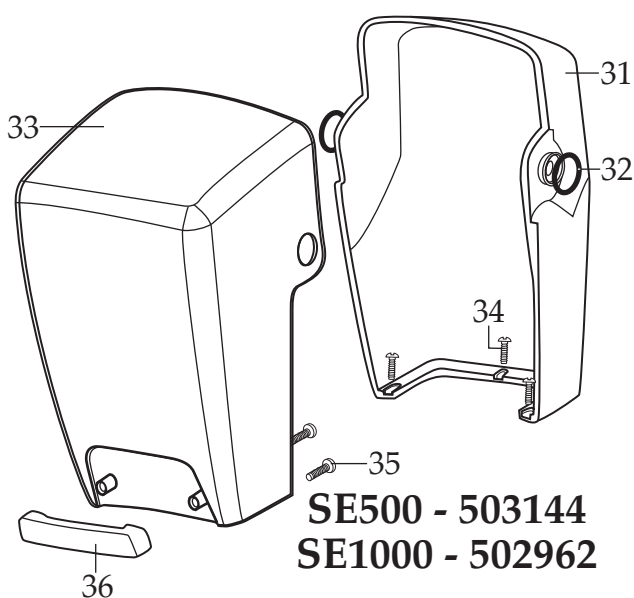
Model

MX1300XT11CE
 MX1300XT31CE
 MX1300XT21CE
 MX1500XT12SEE - MX1500XT12CE
 MX1500XT22SEE - MX1500XT22CE
 MX1500XT32CE

Waring Factory Service Center
 314 Ella T. Grasso Ave.
 Torrington, CT 06790
 Tele. 1-800-269-6640
 Fax 860-496-9017
 www.waringcommercialproducts.com

Illustration # Part # Description

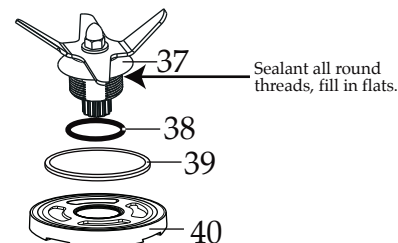
28	012505	Screw (4 required)
29	026430	Corner Post (4 required)
30	028928	Screw (4 required)
	026459	Washer (4 required <i>older units</i>)
	012505	Screw (4 required <i>older units</i>)
31	028250-E	48 oz Inner Sound Enclosure
	026432-E	64 oz. Inner Sound Enclosure
32	027447	O Ring (2 required)
33	028251-E	48 oz Outer Sound Enclosure
	026433-E	64 oz. Outer Sound Enclosure
	502932	64 oz. Enclosure with Magnet Assembly (<i>older units</i>)
34	026461	Screw (3 required)
35	012505	Screw (2 required)
36	026434	Sound Enclosure Handle
37	503397	Blade Assembly (<i>Raptor containers</i>)
	503345	Blade Assembly
38	024271	O Ring
39	024268	Nut Gasket
40	029631	Bearing Holder Nut
41	503326	64 oz. Stackable Raptor Container ONLY
42	030888	48 oz. Stackable Raptor Container ONLY (<i>140401 date code</i>)
	503308	48 oz. Eastman Container ONLY



Notes for 503398, 503348 & 503439 :

Torque 100-125 in/lbs

Sealant all around the threads, fill in flats.
Dow Corning Sealant RTV 733



030889
 Blending Assembly Kit
 (*Raptor containers*)

031060
 Blending Assembly Kit

Catalog

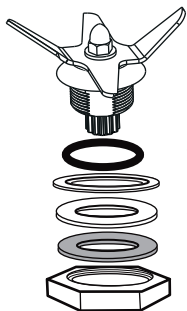
Model

MX1300XTEE
 MX1300XTEES
 MX1300XTPEE
 MX1500XTSEE
 MX1500XTPSEE
 MX1500XTSEES

MX1300XT11CE
 MX1300XT31CE
 MX1300XT21CE
 MX1500XT12SEE - MX1500XT12CE
 MX1500XT22SEE - MX1500XT22CE
 MX1500XT32CE

Waring Factory Service Center
 314 Ella T. Grasso Ave.
 Torrington, CT 06790
 Tele. 1-800-269-6640
 Fax 860-496-9017
 www.waringcommercialproducts.com

Illustration #	Part #	Description
43	026798	Support Washer
44	026648	64 oz. Stainless Steel Container
45	026649	Container Support
46	026797	Bearing Holder Gasket
47	026796	Bearing Holder Washer
48	026795	Stainless Steel Jar Bearing Holder Nut

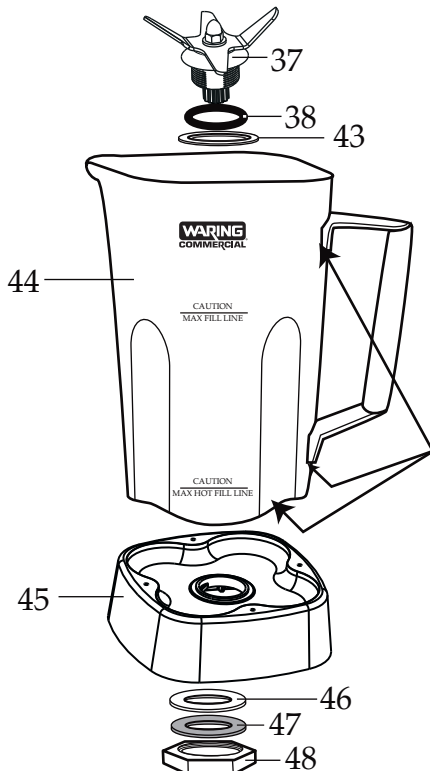


Notes for 503346 :

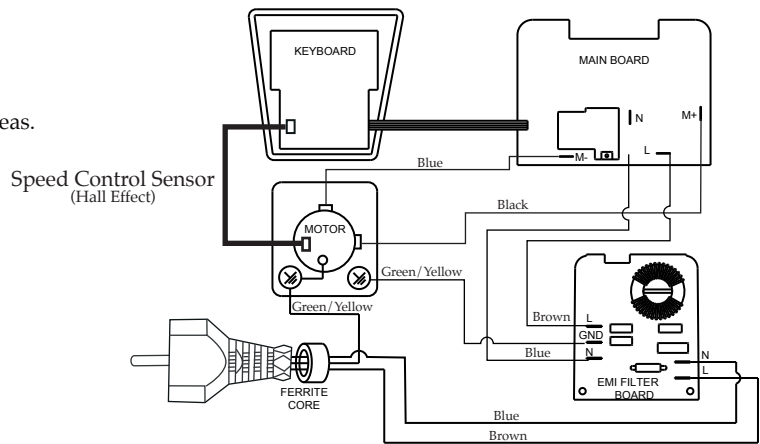
- Torque 100-125 in/lbs
- Sealant applied all around indicated areas.
Dow Corning Sealant RTV 733
- Lubricant applied to O Ring
Dow Corning 200 (R) Fluid

032483

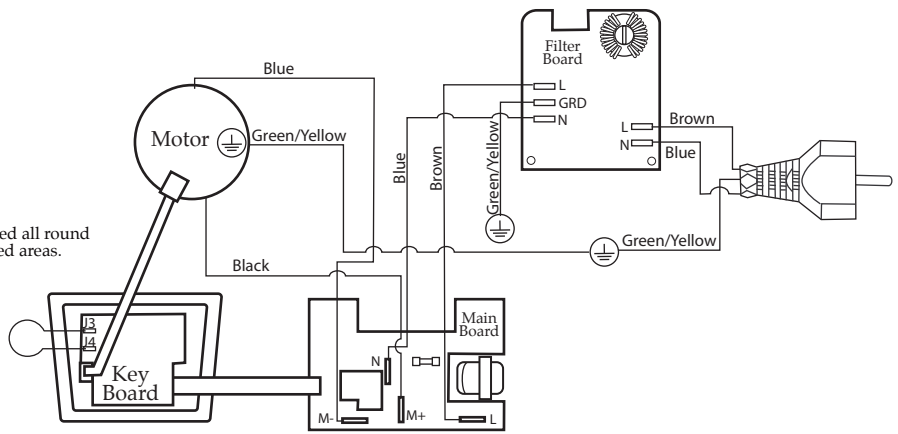
Blending Assembly Kit



Sealant applied all round these indicated areas.



Wiring Diagram



Wiring Diagram
(older units)

503346 - Stainless Steel Container